

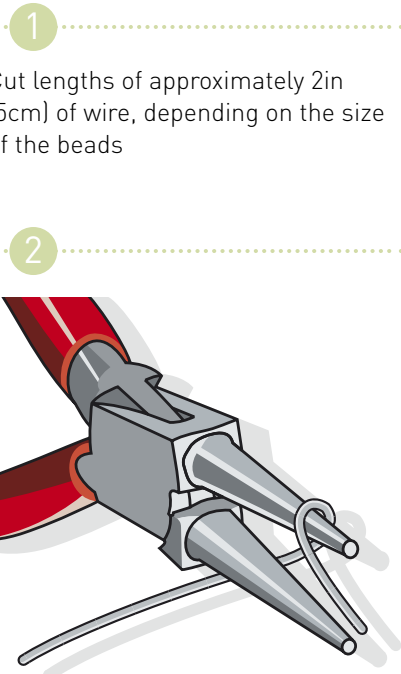
## BEADING WITH WIRE

## SKILL LEVEL

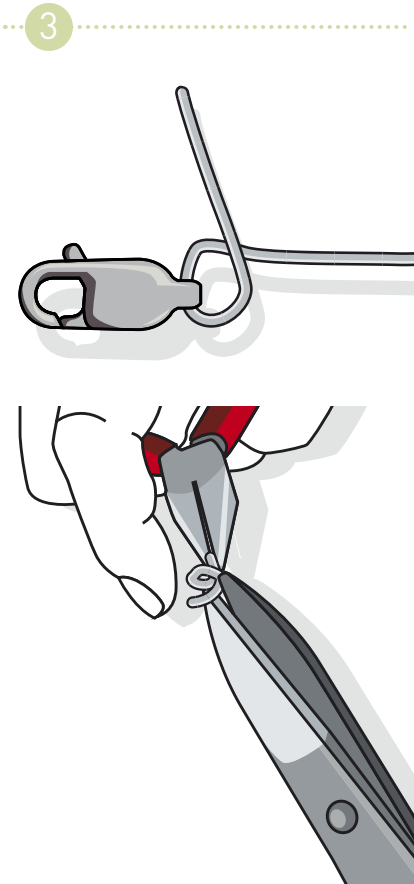
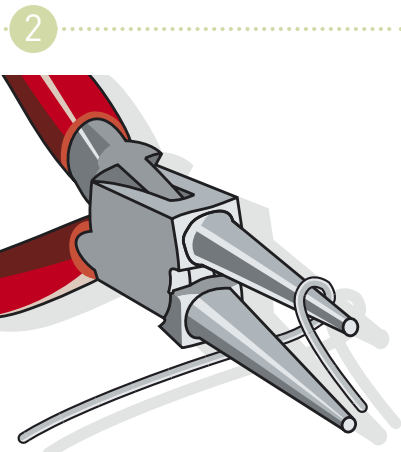
Beginner/Intermediate

## WHAT YOU NEED

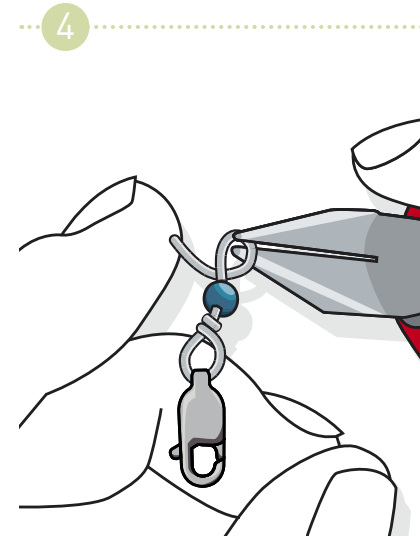
- Beads
- Round-nose and snipe-nose pliers
- Thin round wire
- Wire cutters
- Clasp



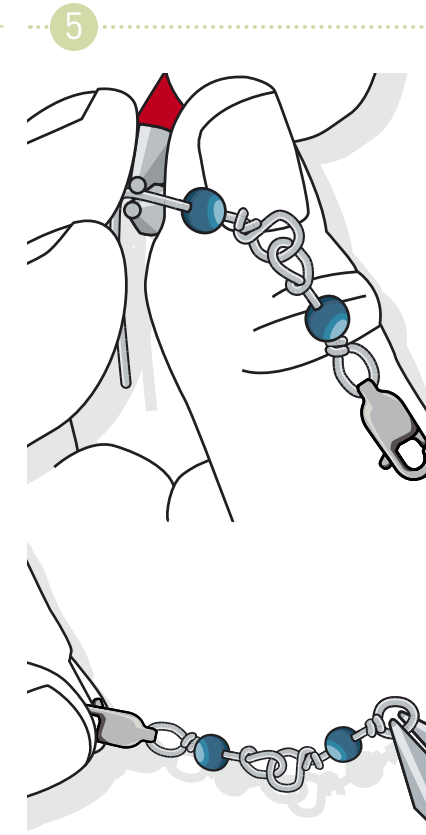
Measure approximately  $\frac{1}{2}$ in (1cm) down the length of the wire and form a loop using round-nose pliers.



Add a clasp or finding at the beginning and end of each chain, and twist the short length of wire around the long one while holding the loop flat in the jaws of the snipe-nose pliers. A couple of neat, tight twists should be enough. Snip off any excess wire and tuck this end in around the central wire using the tips of the snipe-nose pliers.



Add a bead. Form a second loop in the wire using round-nose pliers, leaving a distance in the wire between the bead and the pliers of around  $\frac{1}{8}$ in (3mm). Hold this second loop flat with snipe-nose pliers and twist the short end of the wire a couple of times around the long end in the direction of the bead. Finish off the end of the wire as before.



Take a second length of wire, measure approximately  $\frac{1}{2}$ in (1cm) down the length, and form a loop using round-nose pliers. Insert this second component in through the loop of the previous link before adding a second bead, forming and closing the fourth loop.

Continue until the desired chain length is reached, then add a clasp through the last loop before twisting shut.

## PRO TIPS

Add a thin layer of masking tape or FingerPro around the plier's jaws to avoid bruising the wire.

Try alternating beads with metal hollow forms or sections of tubing.